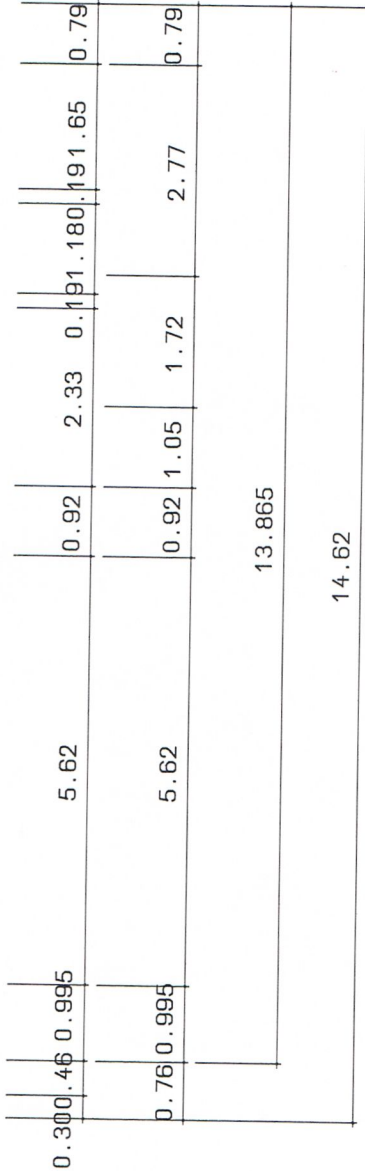
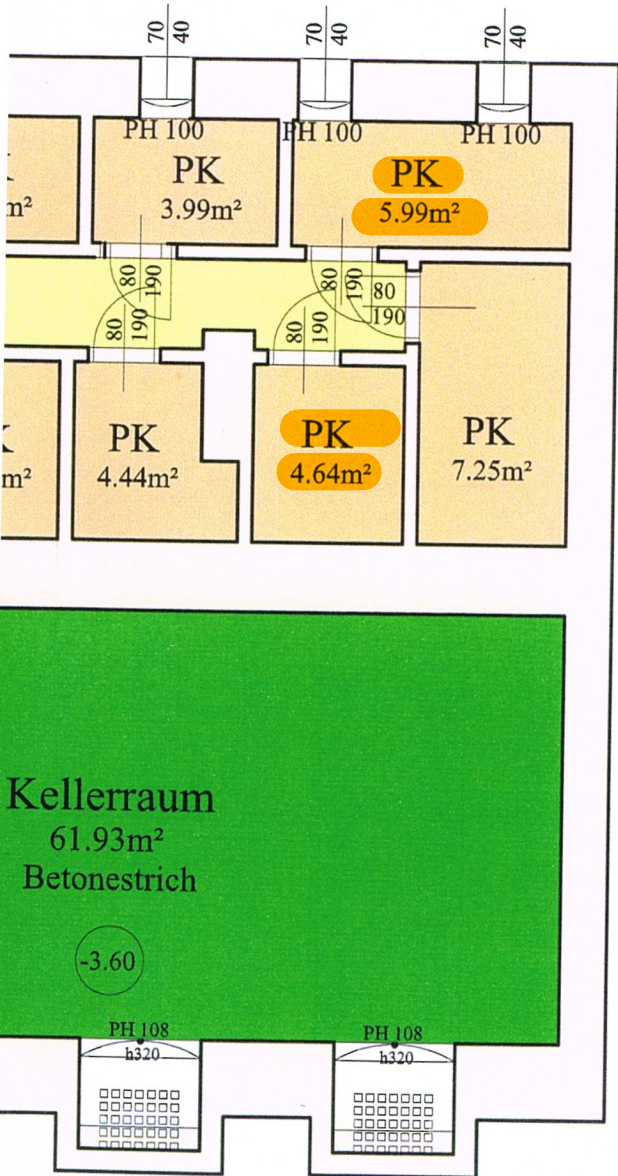


9.53

0.19 2.42 0.19 3.63 0.61

# KELLER 1:100 Mietflächen

Parteienkeller  
Ziegelboden  
ges. 39,53m<sup>2</sup>



gen

0.30 1.59 0.30 1.15 0.30 1.59 0.30 1.06

0.19 1.68 0.48 0.19 1.99 0.19 1.96 0.61

11.04